



# Port Chalmers Yacht Club



Facebook: Port Chalmers Yacht Club

Website: [www.pcy.org.nz](http://www.pcy.org.nz)

## Club contacts

<b>Clubrooms</b>		<b>03 472 7081</b>
<b>Commodore</b>	Steve Duder	021 0349181 commodore@pcyc.org.nz
<b>Secretary</b>	Sarah Duder	021 655137 secretary@pcyc.org.nz
<b>Treasurer</b>	Garry Paterson	027 4883419 treasurer@pcyc.org.nz
<b>Vice Commodore</b>	Greg Densem	027 5683796 vicecommodore@pcyc.org.nz
<b>Rear Commodore</b> (Sailing Convenor)	Graeme Hoskins	027 9101517 rearcommodore@pcyc.org.nz
<b>Boat Storage</b> Dinghy Shed & Trailer Yacht Compound	Greg Densem	027 5683796 boatstorage@pcyc.org.nz
<b>Learn to Sail</b>	Mike McGarry	021 2245234 learntosail@pcyc.org.nz

## Welcome to the 129<sup>th</sup> Sailing Season of PCYC

Port Chalmers Yacht Club encourages participation by all yachtspersons, and visitors are welcome. Our aim is to foster friendly competition in and between all classes and types of yachts by consistently providing a quality racing experience.

Racing is open to all, and most races are run as mixed-fleet events. The Clubhouse is adjacent to the public boat ramp at Back Beach, Port Chalmers, and all are welcome to join our after-race social get-togethers.

**Subscriptions:** Senior Members \$140; Junior Members \$50; Associate Members \$80; Family Membership \$160 (conditions apply).

Membership application forms are available on our website and enquiries are welcome at the Clubrooms.

Discounts on subscriptions apply for payments made prior to 31 Oct 2020.

### Club Racing

**This programme constitutes the Notice of Race for PCYC's club races, although it may be altered subsequently** for any event either by a notice published in the Otago Daily Times sports draw, or by a notice placed on the Clubhouse notice board or main door.

**Cancellations for club races** will be posted on the PCYC Facebook page.

The Rules for club races are those in the current **ISAF & YNZ Rulebook** and any Sailing Instructions issued by the Club for the current season or specific regattas.

Sailing Instructions, including Courses, for club racing are issued to Club Members, and are available for members of other clubs from Race Officers at the Clubhouse.

**PCYC's Otago Anniversary Regatta**, hosted by this Club, will have special sailing instructions and entry arrangements advised.

**Juniors:** For PCYC races, Juniors are competitors aged under 18 years at PCYC on Opening Day.

**VHF Radio Call Signs:** The Clubhouse base call sign is '**Port Yacht Radio**'. The race administration boats' call signs are '**Beverly Pearl**' and '**Stewart Elder**'. The Club normally operates on **Channel 77** for events within the harbour, and **Channel 62** for races extending outside the harbour.

Entries for Club events where possible should be lodged at the Clubhouse **prior** to racing, or made by hail or radio to the Race Committee. **It is essential that the Race Officer is informed of your intention to race.** If a race has fewer than three entries the Race Officer may decide not to proceed with it. Entry fees for Club races are: Keelers & Trailer Yachts - \$10; Senior Centreboarders - \$5; Junior Skippers - \$2 (all prices are as per racing day). Fees are payable on the day at Clubhouse either prior to, or after, the days racing.

### Port Chalmers Yacht Club Sailing Programme

The Club offers racing for all classes on race days; club racing predominantly starts 13:00 hrs.

**Landfall Tower races** and other races outside the harbour are restricted to Keelboats, Trailer Yachts and Sports boats.

**Short Course, buoy races** are for all classes. They may be sailed in divisions. Courses may be in Portobello Bay or in the vicinities of Koputai, Careys, or Deborah Bays. Generally, a minimum of two races per day, back to back, is intended, with additional races run when conditions are suitable. Times listed below have been adjusted for daylight saving.

LWPC = Low tide at Port Chalmers; LWTH = Low tide at Taiaroa Head, Harbour Entrance.

2020		Event	First Start	Tide times and heights
Sep	Fri 25	<b>Pre-Season get-together</b> BYO Fish & Chips and Quiz at PCYC Clubrooms	18:00	
Sep	Sat 26	<b>Opening Day</b> PCYC Potter Cup & Junior Potter Cup Opening Ceremony <b>11:30</b> - Members a plate.	13:00	HWPC 11:23 2.0m LWPC 17:43 0.4m

		Briefing <b>12:00</b>		
	<b>Sun 27</b>	<b>Daylight Saving starts for summer</b>		
<b>Oct</b>	<b>Thu 1</b>	<b>Short-handed Race</b> Maximum 2 crew overall	18:30	HWPC 16:18 2.0m LWPC 22:26 0.3m
	<b>Sat 3</b>	<b>Buoy Racing</b>	13:00	LWPC 11:25 0.4m HWPC 17:32 1.9m
	<b>Sat 10</b>	<b>Broad Bay Boating Club Principal Day</b>	TBA	HWPC 10:32 1.8m LWPC 16:50 0.6m
	<b>Sat 17</b>	<b>Sprint Racing</b> Multiple starts and very short races	13:00	LWPC 10:29 0.0m HWPC 16:44 2.3m
	<b>Sat 24</b> <b>Sun 25</b>	<b>Aviemore Classic</b> – Lake Aviemore Trailer Yachts - Hosted by TY&PBC		Labour Weekend
	<b>Sat 31</b>	<b>Buoy Racing</b>	13:00	LWPC 10:19 0.4m HWPC 16:25 1.9m
<b>Nov</b>	<b>Thu 5</b>	<b>Short-handed Race</b> Maximum 2 crew overall	18:30	LWPC 13:41 0.5m HWPC 19:46 1.7m
	<b>Sat 7</b>	<b>Landfall Tower Race</b>	14:00	LWTH 15:01 0.6m
	<b>Sat 14</b>	<b>Bays/Multi-Leg Race</b>	13:00	LWPC 09:16 0.1m HWPC 15:31 2.2m
	<b>Sat 14</b>	<b>Macandrew Bay Boating Club Principal Day</b>	TBA	LWPC 09:16 0.1m HWPC 15:31 2.2m
	<b>Sat 21</b>	<b>Landfall Tower Race</b>	14:00	LWTH 15:29 0.4m
	<b>Sun 22</b>	<b>Elliot 5.9 Grand Prix Race Day</b>	12:00	HWPC 10:32 1.9m LWPC 16:51 0.4m
	<b>Sat 28</b>	<b>Otago Yacht Club Principal Day</b>	TBA	LWPC 09:11 0.4m HWPC 15:17 1.9m
<b>Dec</b>	<b>Thu 3</b>	<b>Short-handed Race</b> Maximum 2 crew overall	18:30	LWPC 12:33 0.5m HWPC 18:36 1.8m
	<b>Sat 5</b>	<b>Landfall Tower Race</b>	12:00	LWTH 13:44 0.5m
	<b>Sat 12</b>	<b>Channel Race</b>	13:00	HWPC 14:19 2.1m LWPC 20:27 0.1m
	<b>Sat 19</b>	<b>Christmas Mystery Cruise:</b> All welcome. Open to all vessels on the harbour. Theme will be notified in advance. Instructions at Clubhouse from 10:30	13:00	LWPC 14:24 0.3m HWPC 20:35 1.9m
	<b>Sun 20</b>	<b>Christmas Party</b>	13:30	
	<b>Fri 25</b>	<b>Christmas Break</b> The Commodore & Committee wishes all members a safe and happy Festive Break.		

2021		Event	First Start	Tide times and heights
Jan	Sat 16	Landfall Tower Race	11:30	LWTH 12:38 0.3m
	Sat 23	Buoy Racing	13:00	HWPC 12:43 1.7m LWPC 18:53 0.5m
	Sun 24	Elliot 5.9 Grand Prix Race Day	12:00	HWPC 13:30 1.7m LWPC 19:39 0.5m
	Sat 30	Sea Race	13:00	LWPC 11:43 0.3m HWPC 17:49 2.0m
Feb	Sat 6	Buoy Racing	13:00	HWPC 11:53 1.9m LWPC 18:03 0.3m
	Thu 11	Short-handed Race Maximum 2 crew overall	18:30	HWPC 16:22 2.0m LWPC 22:34 0.2m
	Sat 13	Buoy Racing	13:00	LWPC 11:47 0.3m HWPC 17:55 2.0m
	Sat 20	Buoy Racing	13:00	HWPC 11:07 1.6m LWTH 17:20 0.6m
	Sun 21	Elliot 5.9 Grand Prix Race Day	12:00	HWPC 12:02 1.6m LWPC 18:12 0.6m
	Sat 27	Vauxhall Yacht Club Principal Day	TBA	LWPC 10:31 0.2m HWPC 16:38 2.1m
Mar	Sat 6 Sun 7	OYA Festival Regatta at Otago Yacht Club OYA Festival Regatta Day 2	TBA	HWPC 10:34 1.9m LWPC 16:47 0.3m HWPC 11:39 1.9m LWPC 17:50 0.3m
	Sat 13	Buoy Racing	13:00	LWPC 10:37 0.3m HWPC 16:45 2.0m
	Sat 2	Lady Skippers and Forward Hands Race	13:00	HWPC 09:25 1.6m LWPC 15:41 0.6m
	Sat 27	Port Chalmers Yacht Club Principal Day	TBA	LWPC 09:16 0.2m HWPC 15:25 2.1m
	Sun 28	Elliot 5.9 Grand Prix Race Day	12:00	LWPC 10:01 0.2m HWPC 16:12 2.2m
Apr	Sat 10	PCYC Closing Day Old Salts Race Rosebowl Trophy - Mark Foye start. (pre-entry requirement at clubhouse)	TBA	HWPC 14:38 2.0m LWPC 20:50 0.3m
May	Sat 22	PCYC Prize-giving	15:00	
July	Sun 25	AGM & Afternoon tea. Members a plate.	14:00	

**The Club has Sunburst, Optimist and Elliot 5.9 yachts for Club use. See Vice Commodore for details.**

# Port Chalmers Yacht Club Sailing Instructions 2020



## VHF CHANNELS

**Harbour events Ch 77**

**Weather Ch 79**

**Landfall Tower etc Ch 62**

**Emergency Ch 16**

## Race Entry

**All boats are to enter at the club rooms. Use race entry forms.**

## Class Flags



**T All Trailers Yachts**



**R Flag**



**K All Keelers**



**S Flag**



**V All Centreboards**

## Races

**Buoy racing, a minimum of two races, back to back. If conditions allow, extra races will be run. Watch for flag R to indicate this.**

**Penalty Turns Rule 44 720 turn replaced by 360 turn.**

**Landfall Tower Start/Finish Careys Bay White Pole – Pile 24A**

**To Landfall Tower to port to finish. Shortened Course via VHF**

**If withdrawing from a race for any reason please notify race committee as soon as practical.**

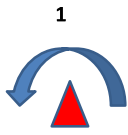
**Committee Boat : Beverly Pearl**

**Rescue Boat : Stewart Elder**

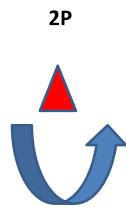
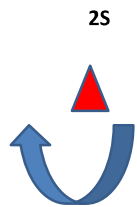
**COURSE 1**



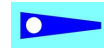
**START 1-2P/2S-1-2P/2S-1-2P/2S-FINISH**



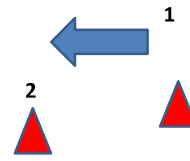
START FINISH LINE



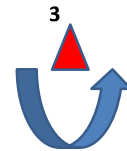
**COURSE 2**



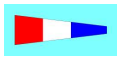
**START 1-2-3-1-2-3-1-2-3--FINISH**



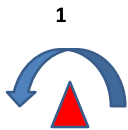
START FINISH LINE



**COURSE 3**



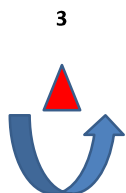
**START 1-2-3-1-2-3-1-3-FINISH**



2



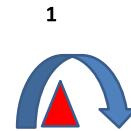
START FINISH LINE



**COURSE 4**



**START 1-2-3-1-2-3-1-3-FINISH**



START FINISH LINE

